



# FEE SCHEDULE

## 2024

---

(LOCAL)







# FEE SCHEDULE

## 2024

---

A message from our Principal

Freshwater Christian College has been supporting, encouraging and inspiring children at our Brinsmead campus, in the tropical city of Cairns, since 1983. The College has consistently maintained its Mission to deliver high-quality education from a Christian Worldview perspective. We pride ourselves on providing the context and conditions for each child to flourish; spiritually, academically and socially. Freshwater is more than a school, it is a community. One in which students are known and valued for who they are and supported to explore their God-given talents.

Our College looks forward to serving the needs of your child, both now and in the future.

**Matthew Scott**

College Principal







# ALL INCLUSIVE

## TUITION FEES

The annual tuition fee covers all compulsory curriculum activities including excursions and camps. This ensures there are no surprise costs during the year so that families can budget effectively.

Sibling discounts apply when a family has two or more children attending the College at the same time. The 1st child rate applies to the child in the highest year level.

For students in Years 7-12, the annual tuition fee also includes Chromebook rental under the College Managed Device Program (MDP).

Stationery is included in the tuition fees for Primary students (P-6) and digital devices are provided within the classrooms.

Freshwater Christian College offers a comprehensive list of Vocational Education and Training programs for secondary students to study alternative pathways. A supplement fee of \$300.00 for participating students per year, is required to assist in offsetting the expense of this program to the College.

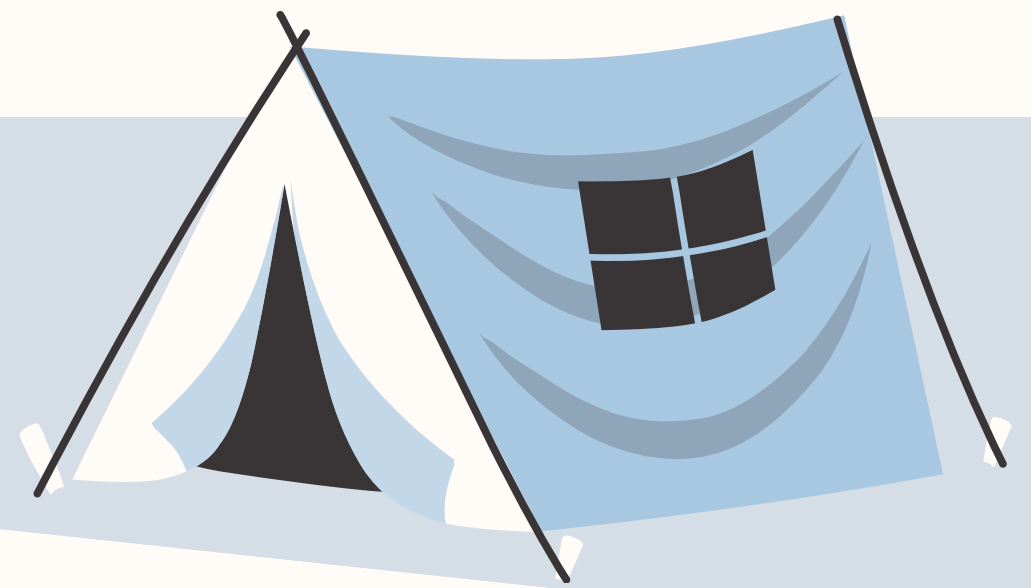
	1st Child	2nd Child	3rd Child	Subsequent Children (each)
<b>Junior Primary (Prep-3)</b>	\$5,150	\$4,120	\$1,802.5	\$1,030
<b>Senior Primary (4-6)</b>	\$5,500	\$4,400	\$1,925	\$1,100
<b>Junior Secondary (7-9)</b>	\$6,290 (inclusive of Chromebook rental)	\$5,032 (inclusive of Chromebook rental)	\$2,201.5 (inclusive of Chromebook rental)	\$1,258 (inclusive of Chromebook rental)
<b>Senior Secondary (10-12)</b>	\$6,990 (inclusive of Chromebook rental)	\$5,592 (inclusive of Chromebook rental)	\$2,446.5 (inclusive of Chromebook rental)	\$1,398 (inclusive of Chromebook rental)

# ALL INCLUSIVE FEES

## INCLUDING:

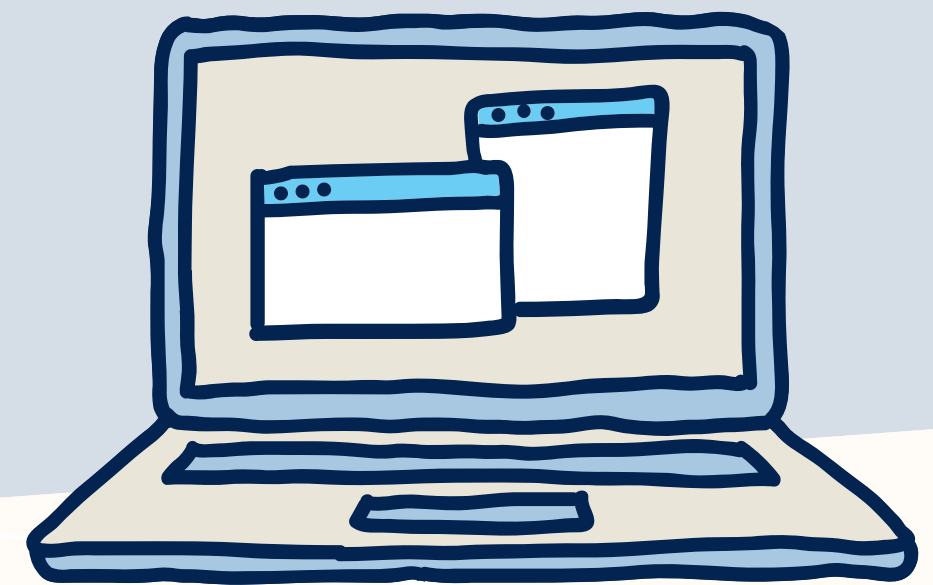


(Compulsory)  
Camps



(Compulsory)  
Excursions

(Secondary)  
Chromebook Rental



(Primary)  
Classroom-Based Digital Devices



(Primary)  
Stationery

Resource and Capital Levies







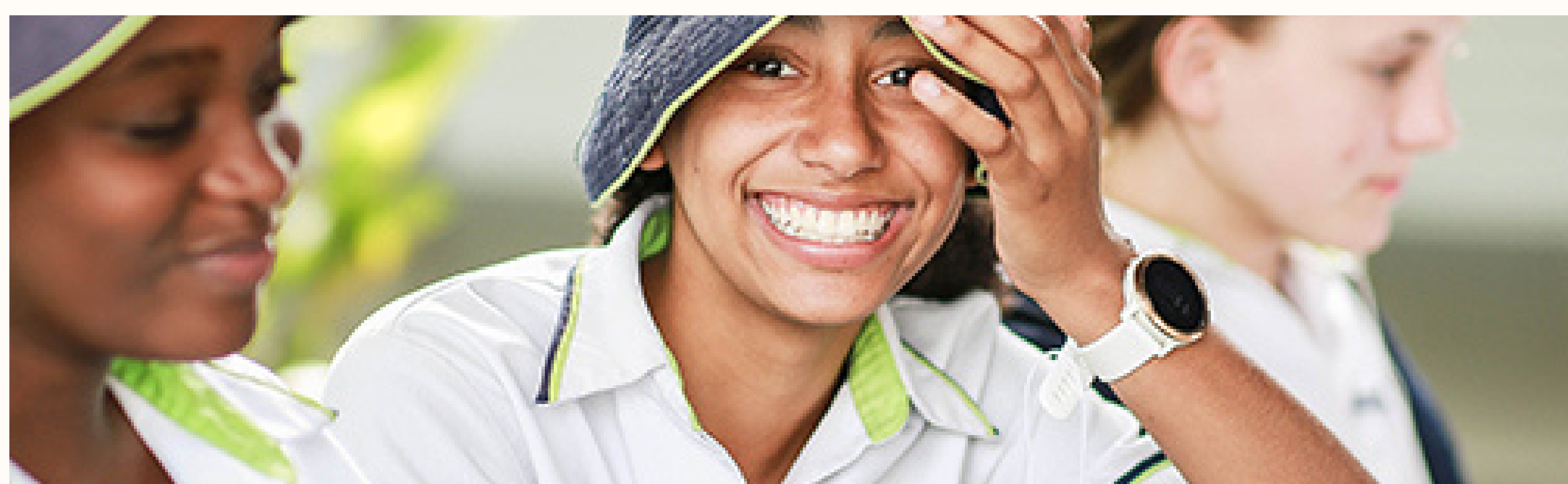
# FEE SCHEDULE

## ENROLMENT APPLICATION FEES

**Application Fee** (non-refundable) \$110 per application/student (includes GST)

**Enrolment Deposit\*** \$400 per family

\* This applies to new families only and applied against the Parents account once the child/ren start attending school.



## UNIFORMS

Uniform costs are payable separately to the Uniform Shop situated on the College campus. The Uniform Shop is managed by Weareco Pty Ltd.

## DISTANCE EDUCATION SUBJECTS

For Senior Students (11/12) choosing to study a subject through Distance Education, the College will cover the full cost of one subject.

Should a student enrol in more than one Distance Education subject, 50% of the cost of the 2nd subject will be covered by the school. Courses are currently charged between \$1,400 and \$1,500 per two Units (ie; 1 year), depending upon the provider, meaning parents will pay up to \$750 over two units per year, with the College covering the other half.

Please note that the full unit is charged, even if a student withdraws from the unit.

On approval from the Head of Secondary, Junior Secondary Students (7-10) who are able to demonstrate an aptitude for a subject may be able to study via Distance Education. Parent/s are required to pay the full distance education fees.





# PAYMENT OPTIONS

Families have the flexibility of paying annual fees up-front or on a payment plan spread over a number of instalments throughout the year.

A 5% Discount applies when Annual Tuition Fees are paid upfront by the due date stated on the annual invoice. This does not apply to students starting part way through the year.

## Annual Payment options:

**Our preferred payment method is B Pay. B Pay links directly to your parent account. Please set up regular recurring payments via your banking provider using the Biller Code 426270 and your unique reference number. Your B Pay details are on the top right hand corner of your parent statement.**

	<b>Biller Code:</b> <b>Ref:</b>
<b>Telephone &amp; Internet Banking – BPAY®</b> Contact your bank or financial institution to make this payment from your cheque, savings, debit or transaction account. More info: <a href="http://www.bpay.com.au">www.bpay.com.au</a>	

**EFTPOS or Credit Card (VISA or MasterCard)**

**Cash, Cheque, Money Order**

## Direct Deposit Details

Direct deposit is available, please contact our finance team for direct deposit details on [finance@fcc.qld.edu.au](mailto:finance@fcc.qld.edu.au)

\* If using internet banking, please ensure that you use your numerical account code shown on your invoice as the payment reference to ensure payment allocation is to the correct account.

## Payment Plan options:

**Our finance team can assist you with calculating the instalment amount.** please contact our finance team on [finance@fcc.qld.edu.au](mailto:finance@fcc.qld.edu.au)





# OPTIONAL

## BUS SERVICE

**Per Child Return Per Annum: \$1,800 Per Child One Way Per Annum: \$900**

**Family Per Annum Return \$4000 One Way \$2000**

*In regards to the bus a family is qualified by three or more students*

**Casual rate (per trip): \$10**

Bus Fees are payable via the RollCall App. Please contact the College Bus Coordinator for all enquiries and bookings for the bus service.

## PRIVATE INSTRUMENTAL MUSIC TUITION

---

Costs will be charged directly to families by the individual music tutors involved.

